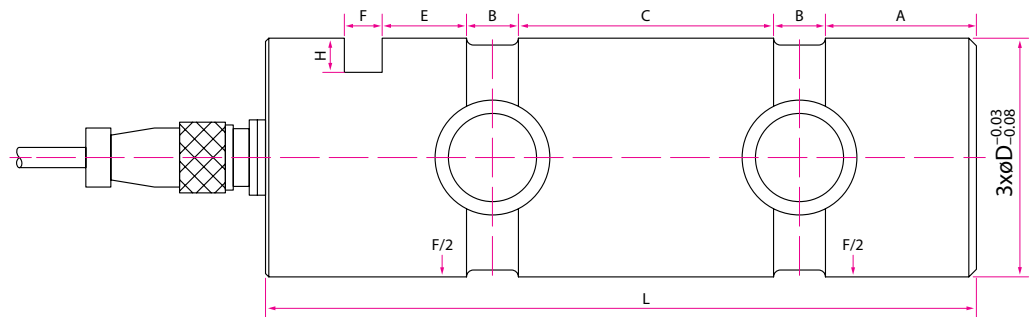


CLP – Compression Lock Pin



Model	Capacity (t)	A (mm)	B (mm)	C (mm)	D (mm)	E (mm)	F (mm)	H (mm)	L (mm)
CLP15	15	44	15	75	65	25	11	10	208
CLP20	20	44	15	75	65	25	11	10	208
CLP25	25	44	15	75	70	25	11	10	208
CLP60	60	31	15	168	100	31	11	14	293
CLP80	80	31	15	168	100	31	11	14	293

For capacities and configurations not featured in this brochure, please contact MTC representatives.

TECHNICAL PARAMETER

Rated Capacities (E _{max})	15, 20, 25, 60, 80t	Temperature Range (Compensated)	-10°C ~ +40°C
Sensitivity	1.0±0.1 mV/V	Temperature Range (Operating)	-30°C ~ +70°C
Total Error	±0.5%F.S.	Maximum Safe Overload	150%F.S.
Creep Error (30 min)	±0.05%F.S.	Ultimate Overload	300%F.S.
Zero Balance	±1%F.S.	Excitation, Recommended	10 ~ 12V DC
TC ZERO	±0.05%F.S./10°C	Excitation, Maximum	15V DC
TC SPAN	±0.05%F.S./10°C	Protection Class	IP67
Input Resistance	700±20Ω	Construction	Alloy Steel
Output Resistance	700±3Ω	Cable Length	10m
Insulation Resistance	≥2000MΩ	Cable Diameter	ø6mm

4 Wires
Exc+(Red); Exc-(Black);
Sig+(Green); Sig-(White)