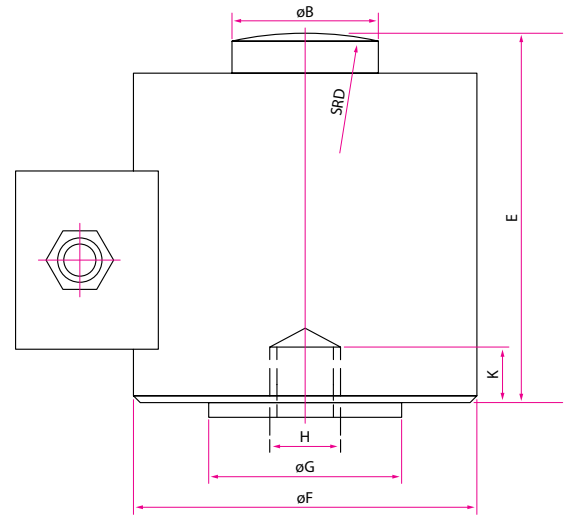


CLG – General Compression Loadcell



| Model | Capacity (t) | B (mm) | D (mm) | E (mm) | F (mm) | G (mm) | H (mm) | K (mm) |
|---------|--------------|--------|--------|--------|--------|--------|--------|--------|
| CLG20 | 20 | 31.8 | 150 | 82.6 | 76 | 48 | M12 | 10 |
| CLG25 | 25 | 38 | 150 | 117 | 100 | 38 | M20 | 14 |
| CLG30 | 30 | 38 | 150 | 117 | 100 | 38 | M12 | 10 |
| CLG40 | 40 | 38 | 150 | 117 | 100 | 38 | M20 | 14 |
| CLG50 | 50 | 58 | 200 | 127 | 107 | 58 | M20 | 14 |
| CLG60 | 60 | 58 | 200 | 127 | 107 | 58 | M20 | 14 |
| CLG70 | 70 | 58 | 250 | 142 | 125 | 58 | M20 | 14 |
| CLG100 | 100 | 70 | 300 | 184 | 165 | 70 | M20 | 20 |
| CLG150 | 150 | 70 | 300 | 184 | 165 | 78 | M20 | 20 |
| CLG200 | 200 | 100 | 500 | 250 | 223 | 112 | M24 | 36 |
| CLG300 | 300 | 108 | 500 | 250 | 223 | 112 | M24 | 36 |
| CLG400 | 400 | 108 | 500 | 250 | 223 | 112 | M24 | 36 |
| CLG500 | 500 | 115 | 500 | 300 | 223 | 120 | M24 | 36 |
| CLG1000 | 1000 | 125 | 500 | 320 | 242 | 155 | M24 | 36 |

For capacities and configurations not featured in this brochure, please contact MTC representatives.

TECHNICAL PARAMETER

| | | | |
|-------------------------|---|---------------------------------|--|
| Rated Capacities (Emax) | 20, 25, 30, 40, 50, 60, 70, 100, 150, 200, 300, 400, 500, 1000t | Temperature Range (Compensated) | -10°C ~ +40°C |
| Sensitivity | 2.0±0.002mV/V | Temperature Range (Operating) | -30°C ~ +70°C |
| Total Error | ±0.03%F.S.(20 ~ 60t); ±0.05%F.S.(70 ~ 100t); ±0.1%F.S.(150 ~ 500t); ±0.5%F.S.(1000t) | Maximum Safe Overload | 150%F.S. |
| Creep Error (30 min) | ±0.03%F.S. | Ultimate Overload | 200%F.S. |
| Zero Balance | ±1%F.S. | Excitation, Recommended | 10 ~ 12V DC |
| TC ZERO | ±0.02%F.S./10°C | Excitation, Maximum | 15V DC |
| TC SPAN | ±0.02%F.S./10°C | Protection Class | IP68 |
| Input Resistance | 400±20Ω | Construction | Alloy Steel |
| Output Resistance | 352±3Ω, 352±5Ω (L≥15m) | Cable Length | 12m(20t), 14m(25~40t), 16m(50~150t), 20m(200~1000t) |
| Insulation Resistance | ≥5000MΩ | Cable Diameter | ø 8mm; 6mm(20t) |

OAP version 4 Wires
Exc+(Blue); Exc-(Black);
Sig+(White); Sig-(Red)